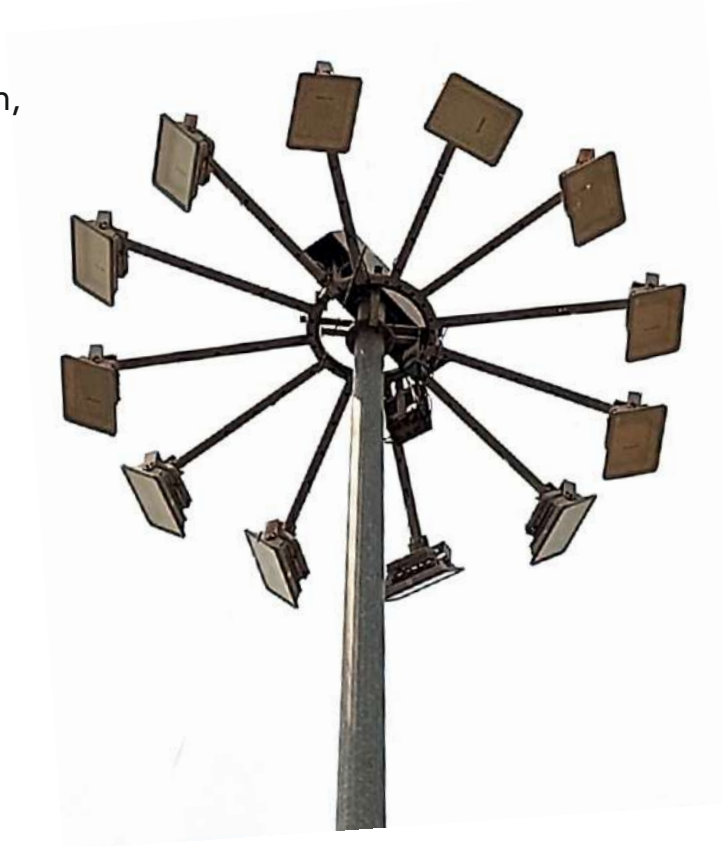


# OUTDOOR LIGHTING

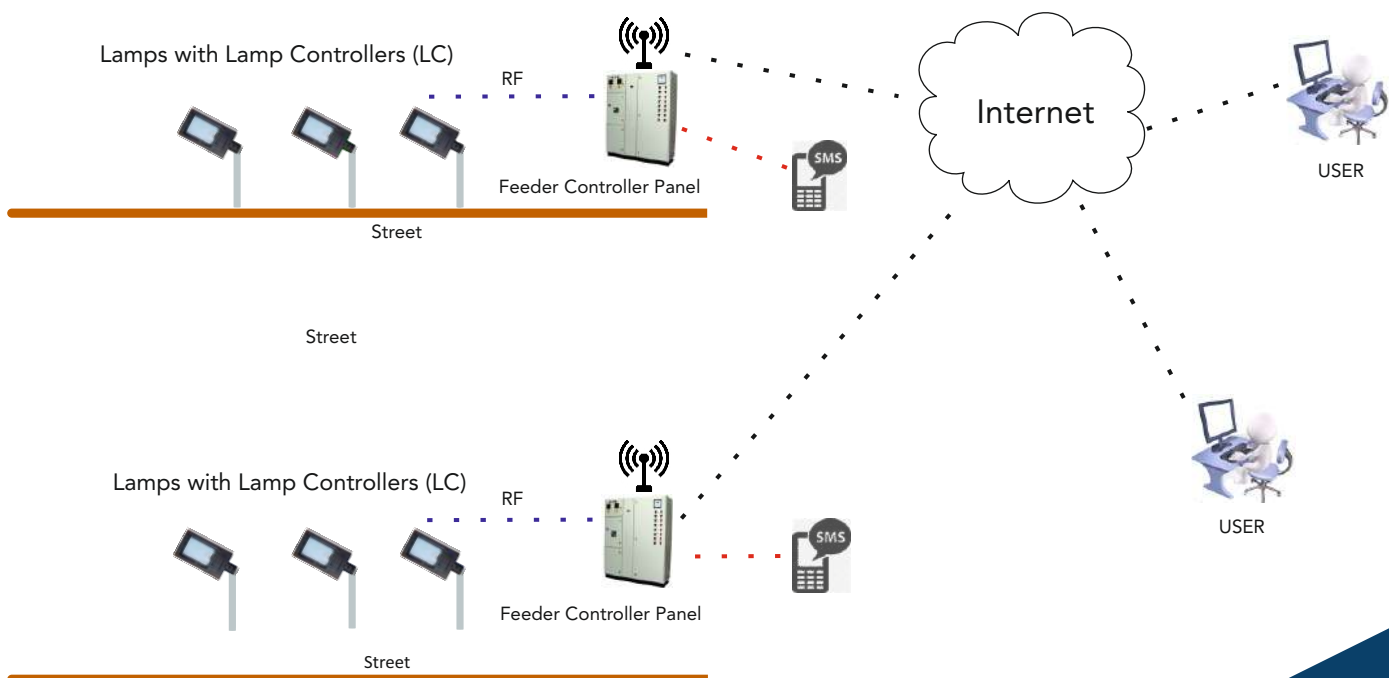
## HIGH MAST

NBL offers an high mast light ideal for corrosive atmosphere, hot dipped galvanized high strength, light weight product.

- Wattage-350-400W
- Range 20 - 30 meter
- One high mast set having- 6/12 nos of light
- Double ring-6 nos lights on 1 ring
- Wind speed capacity 180km/hr
- Loco box included
- Aviation light on each high mast- 6 nos
- High efficiency light
- Energy saving 85%
- High power LEDs light



## CCMS SYSTEM



# SOLAR STREET LIGHT (ALL IN ONE)



## SOLAR STREET LIGHT (ALL IN ONE)

Wattage	10W	20W	30W	40/60W
Model Number	PH-11-A-L-WXOA			
Battery	29.6 AH	44.4 AH	77.7 AH	26.4 AH
Dimensions	400(L)X210(W) X50(H) mm	500(L)X230(W) X45(H) mm	630(L)X250(W) X45(H) mm	1090(L)X363(W) X44(H) mm

# EMERGENCY LIGHT

LED Well Glass

LED Bulk Head

LED Flood Light





## STREET LIGHT (IP-66) FRAME MODEL

Wattage	10-45W	50-60W
Model Number	PE-11-D-L-WXOA	
Supply	140-270V AC	
Dimensions	310(L)X106(W) X66(H) mm	402(L)X147(W) X64(H) mm



## STREET LIGHT (IP-65) FRAME MODEL

Wattage	80-100W	120-180W	200-250W
Model Number	PE-11-D-L-WXOA		
Supply	140-270V AC		
Dimensions	390(L)X185(W) X70(H) mm	500(L)X252(W) X72(H) mm	515(L)X260(W) X82(H) mm



## STREET LIGHT (IP-65) GLASS MODEL

Wattage	10-45W	50-60W
Model Number	PE-11-D-L-WXOA	
Supply	140-270V AC	
Dimensions	310(L)X106(W) X66(H) mm	402(L)X147(W) X63(H) mm



## STREET LIGHT (IP-65) GLASS MODEL

Wattage	80-100W	120-180W
Model Number	PE-11-D-L-WXOA	
Supply	140-270V AC	
Dimensions	390(L)X185(W) X70(H) mm	425(L)X195(W) X80(H) mm



## FLOOD LIGHT

Wattage	10-30W	40-50W	60-70W
Model Number	PD-17-D-L-WXOA		
Supply	140-270V AC, 110/220V DC		
Dimensions	163(L)X160(W) X45(H) mm	196(L)X176(W) X55(H) mm	193(L)X235(W) X55(H) mm



## FLOOD LIGHT

Wattage	80-120W	140-160W	180-220W
Model Number	PD-17-D-L-WXOA		
Supply	140-270V AC, 110/220V DC		
Dimensions	285(L)X245(W) X55(H) mm	305(L)X285(W) X70(H) mm	345(L)X325(W) X80(H) mm



## FLOOD LIGHT

Wattage	250-350W	400-500W
Model Number	PD-17-D-L-WXOA	
Supply	140-270V AC, 110/220V DC	
Dimensions	480(L)X430(W)X110(H) mm	595(L)X395(W)X70(H) mm



## RECHARGEABLE FLOOD LIGHT

Wattage	10W	20/30W	40W	50/60/80W
Model Number	PD-18-P-L-WXOA			
Battery	4.4 AH	4.4/6.6 AH	6.6 AH	20.8 AH
Dimensions	114(L)x86(W) x116(H) mm	180(L)x140(W) x131(H) mm	308(L)x270(W) x62(H) mm	330(L)x300(W) x74(H) mm



## POST TOP LANTERN

Wattage	10-20W	30-50W
Model Number	PE-13-D-L-WXOA	
Supply	140-270V AC	
Dimensions	345(H)X82(W) mm	410(H)X450(W) mm



## GARDEN / PATHWAY LIGHT

Wattage	8-12W	
Model Number	PD-15-D-L-WXOA	
Supply	140-270V AC	
Dimensions	102(Dia)X495(H) mm	



## SEARCH LIGHT (SECURITY APPLICATIONS)

Wattage	150W	
Model Number	PU-17-D-L-WXOA	
Supply	230V AC	
Dimensions	320(φ)X165(H) mm	



## EXIT LIGHT

Wattage	3W	
Model Number	PG-11-D-L-WXOA	
Supply	140-270V AC	
Dimensions	227(L)X310(W)X10(H) mm	

# INDUSTRIAL LIGHTING



## EMERGENCY EXIT LIGHT

Wattage	2X10/2X20W
Model Number	PG-11-D-L-WXOA
Supply	12/140-270V AC
Dimensions	340(L)X290(W)X70(H) mm



## FLAME PROOF WELL GLASS (ZONE II B,C)

Wattage	25-45W	60-120W	150W
Model Number	PF-11-D-L-WXOA		
Supply	140-270V AC, 110/220V DC		
Dimensions	142(Dia)X155(D)	255(Dia)X165(D)	350(Dia)X210(D)



## FLAME PROOF TUBE LIGHT (ZONE II B,C)

Wattage	20W	2X20W
Model Number	PC-14-D-L-WXOC	
Supply	140-270V AC, 110/220V DC	
Dimensions	740(L)X310(W) mm	



## FLAME PROOF HAND LAMP (ZONE II B,C)

Wattage	15-20W
Model Number	PK-11-D-L-WXOE
Supply	140-270V AC
Dimensions	127(Dia)X380(H)





HAND LAMP (CONFINED SPACE APPLICATION DURING SHUTDOWN)			
	GLASS		ACRYLIC
Wattage	7W	10/20W	12W
Model Number	PK-11-D-L-WXOA		
Supply	24/140-270V AC		140-270V AC
Dimensions	85(Dia)X 255(H)mm	90(Dia)X 255(H)mm	90(Dia)X 230(H)mm



TRIPROOF LIGHT		
Wattage	2X10W	2X20W
Model Number	PC-14-D-L-WXOB	
Supply	90-270V AC	
Dimensions	~2ft	~4ft



NON FLAME PROOF WELL GLASS		
Wattage	15-45W	50/60/70/80/90W
Model Number	PF-11-D-L-WXOB	
Supply	140-270V AC, 110/220V DC	
Dimensions	142(Dia)X125(D) mm	195(Dia)X190(H) mm



AVIATION LIGHT	
Wattage	6/14/2X14W
Model Number	PG-12-D-L-WXOA
Supply	140-270V AC
Dimensions	175(Dia)X260(H) mm / 175(Dia)X50(L)X260(H) mm



## HELMET LIGHT

Wattage	2W
Model Number	PQ-11-P-L-WXOA
Battery	2.2 AH Battery
Dimensions	280(φ)x212(H)x125(W) mm



## TRAFFIC LIGHT

Wattage	5W	9W
Model Number	PJ-11-D-L-WX00A	
Supply	230V AC	
Dimensions	200(φ) mm	300(φ) mm



## BULK HEAD

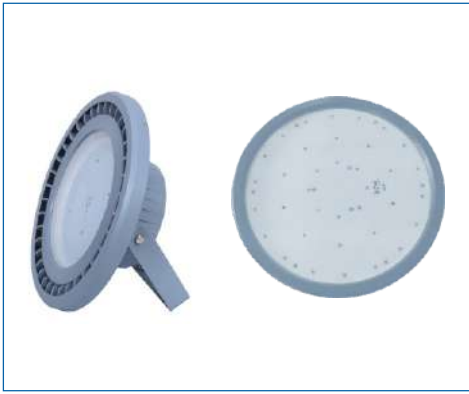
Wattage	10/15W	
Model Number	PP-11-D-L-WXOA	
Supply	230V AC/220/110V DC	
Dimensions	229(L)x85(W)x54(H) mm	



## PIT LIGHT

Wattage	15/22W	
Model Number	PL-11-E-L-WXOA	
Supply	48V AC	
Dimensions	280(L)x250(W)x50(H) mm	





## HIGH BAY LIGHT CORONA/LUNAR

Wattage	100/120/150W	200-250W	300W
Model Number	PD-17-D-L-WXOB		
Supply	140-270V AC		
Dimensions	375(Dia)X126(H)mm	494(Dia)X424(H)mm	610(Dia)X572(H)mm

## INDOOR LIGHTING



## LED T8 TUBE LIGHT/ROD

Wattage	10/18/24W	5/10/18/24W
Model Number	PC-14-D-L-WXOB	
Supply	140-270V AC, 110/220V DC	
Dimensions	1/2/4ft	1/2/4ft



## LED T5 TUBE LIGHT

Wattage	5/10/18/24W	18/24W
Model Number	PC-14-D-L-WXOB	
Supply	140-270V AC, 110/220V DC	
Dimensions	1/2/4ft	4ft



## DOWN LIGHT (ROUND/SQUARE)

Wattage	3W	6W	12W	18W
Model Number	PB-13-D-L-WXOA			
Supply	140-270V AC, 110/220V DC			
Cut Out	75(φ)	85(φ)	105(φ)	125(φ)
Dimensions	92(Dia) X35(D/H) mm	105(Dia) X42(D/H) mm	126(W) X42(D/H) mm	150(W) X42(D/H) mm



### SURFACE MOUNT DOWN LIGHT (ROUND)

Wattage	6W	12W	18W
Model Number	PB-15-D-L-WXOA		
Supply	100-270V AC		
Dimensions	116(Dia)X46(H)mm	170(Dia)X32(H)mm	208(Dia)X28(H)mm



### SURFACE MOUNT DOWN LIGHT (SQUARE)

Wattage	6W	12W	18W
Model Number	PB-15-D-L-WXOA		
Supply	100-270V AC		
Dimensions	96(L)x96(W)x51(H) mm	121(L)x121(W)x51(H) mm	143(L)x143(W)x51(H) mm



### EMERGENCY LIGHT

Wattage	6-18W	24W
Model Number	CB-16-D-L-WXOA	
Supply	230V AC	
Dimensions	153(L)x153(W) mm	240(L)x240(W) mm



### RECESSED MOUNT/CLEAN ROOM LIGHT (2X2)

Wattage	20W (1x1)	40/60/80W (2X2)	45/60W (Clean room)
Model Number	PB-12-D-L-WXOA		
Supply	230V AC		
Dimensions	275(L)x275(W) mm	595(L)x595(W) x80(H) mm	600(L)x600(W) x70(H) mm